

LEGEND

- AFS - AIR FLOW SWITCH
- CB - CIRCUIT BREAKER
- CO - CONVENIENT OUTLET
- CLG - COOLING
- CR - CONTROL RELAY
- ES - EMERGENCY SWITCH
- FC - FREEZESTAT
- FLA - FULL LOAD AMPS
- FU - FUSE
- GR - GROUND FAULT CIRCUIT INTERRUPTOR
- HP - HORSE POWER
- HTC - HIGH TEMPERATURE SWITCH
- HTS - HEATING
- ITS - INTERNAL THERMAL SENSOR
- J - JUMPER
- KW - KILOWATT
- LIS - LIQUID LINE SOLENOID
- LRA - LOCKED ROTOR AMPS
- LP - LOW PRESSURE SWITCH
- M - CONTACTOR
- MP - MOTOR PROTECTOR
- MCA - MINIMUM CIRCUIT AMPS
- MCS - MOULDED CASE CIRCUIT BREAKER
- MFS - MAXIMUM FUSE SIZE
- OC - OVERCOURT PROTECTOR
- PHR - PHASE MONITOR RELAY
- POT - POTENTIOMETER
- RA - RATED LOAD AMPS
- RA - RETURN AIR
- SA - SUPPLY AIR
- STG - STAGE
- SW - SWITCH
- TB - TERMINAL BLOCK
- TR - TIMER RELAY
- T - TRANSFORMER
- TAS - THERMOSTAT
- TS - TEMPERATURE SENSOR
- R - RED
- G - GREEN
- A - AMBER
- VFD - VARIABLE FREQ. DRIVE
- * - FIELD SUPPLY
- ▲ - MANUAL RESET
- - FACTORY WIRING
- - FIELD WIRING
- - SEE NOTE "H"
- - CAM-LOCK

ELECTRICAL DATA

MOTOR	HP	RLA	LRA
COMP 1	38.5	49A	310A
C/FAN 1~2	2	4.2A	25A
PUMP	7.5	9.0A	63.5A

UNIT DATA

FLA	65.4A
MCA	77A
MFS	100A

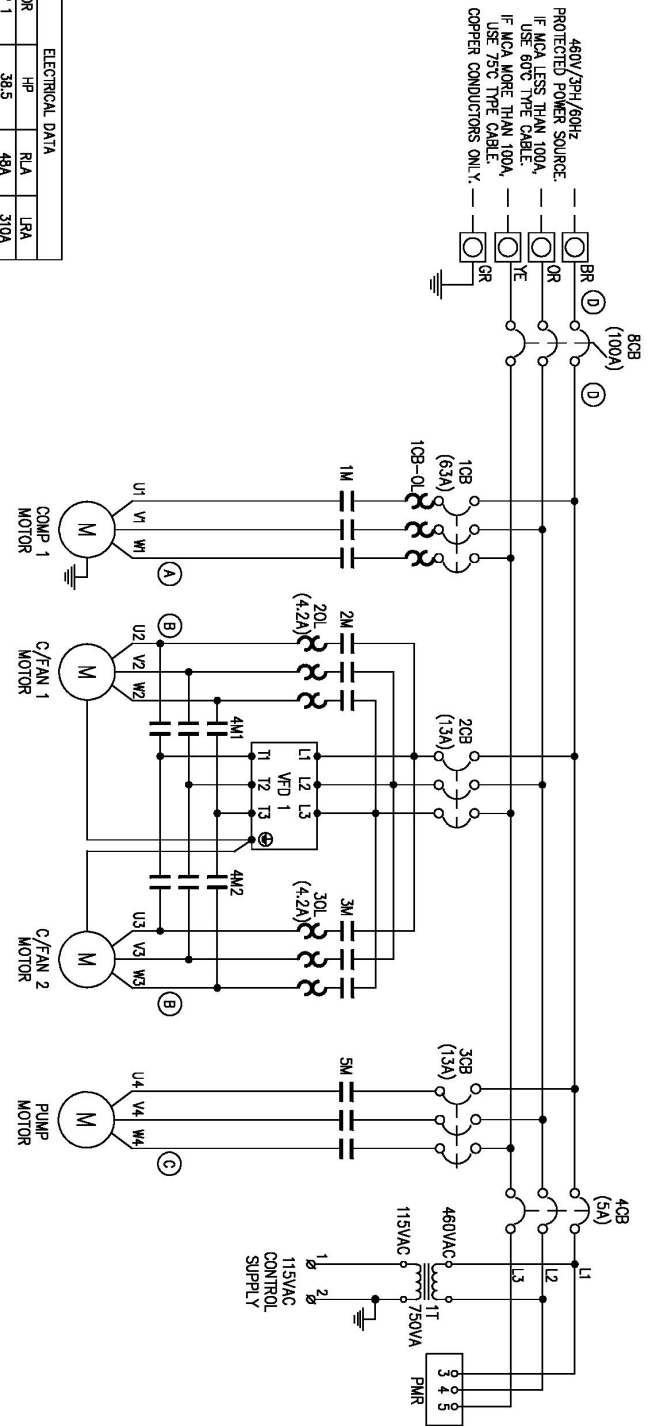
SET POINTS

FC	38F/MANUAL RESET
THP	560F/MANUAL RESET
TIP	65F/MANUAL RESET
2HP-1	350F CUT IN/295F CUT OUT
3HP-1	400F CUT IN/345F CUT OUT
TTR	20SECS
10B-OL	59A
20L-30L	4.2A
FLS	550RPM/AUTO RESET

CABLE SIZE

CONTROL - 14AWG

- (A) - 6AWG, BLACK
- (B) - 12AWG, BLACK
- (C) - 10AWG, BLACK
- (D) - 1AWG, BLACK



THIS DOCUMENT IS THE PROPERTY OF SMARTTECH AND SHOULD NOT BE DISCLOSED OR USED WITHOUT THE EXPRESSED CONSENT OF COMPANY

PROJECT: SCROLL RENTAL CHILLER

MODEL: SCOD 030AR4

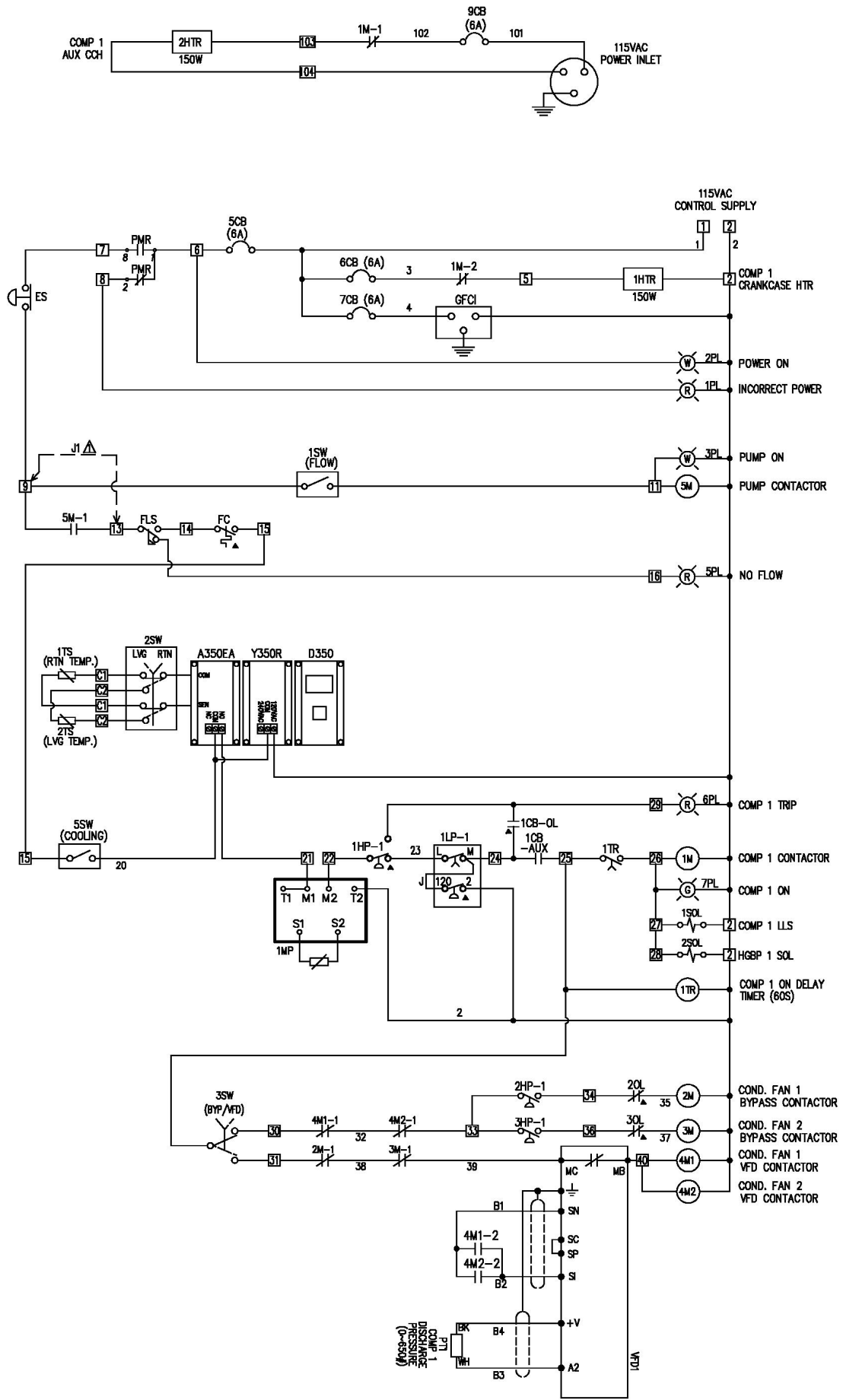
TITLE: SCHEMATIC WIRING DIAGRAM



SMART FAMILY OF COOLING PRODUCTS

www.SmartCoolingProducts.com 887-560-5805

REV.	DESCRIPTION	DATE	REV. BY	CHK'D. BY	APP'D. BY	CHECKED BY:	DATE:	UNIT NO:	DRAWING NO:	SHEET	F.O. NO:
02.	REMOVE 1TB	31.03.17	JUN				09/01/2017			1 OF 5	500210
01.	REVISED AS REVIEWED	20.02.17	JUN	Hkins	LOW KC			19171	S210720146		



△ TO RUN UNIT WITH EXTERNAL PUMP, CONNECT JUMPER J1

THIS DOCUMENT IS THE PROPERTY OF SMARTTECH AND SHOULD NOT BE DISCLOSED OR USED WITHOUT THE EXPRESSED CONSENT OF COMPANY

PROJECT: SCROLL RENTAL CHILLER



WWW.SMARTTECHPRODUCTS.COM 2815540-28105

DRAWN BY: JUN
 CHECKED BY:
 DATE: 09/01/2017

TITLE: SCHEMATIC WIRING DIAGRAM

APPROVED BY: LOW KC
 DATE: 09/01/2017

UNIT NO: 19171

DRAWING NO: S210720146
 SHEET 2 OF 4

02. UPDATE NUMBERING	31.03.17	JUN	Hearts	LOW KC	DATE: 09/01/2017
01. REVISED AS REVIEWED	20.02.17	JUN			DATE:
REV.	DATE	REV. BY	CHK'D. BY	APP'D. BY	DATE:
DESCRIPTION					