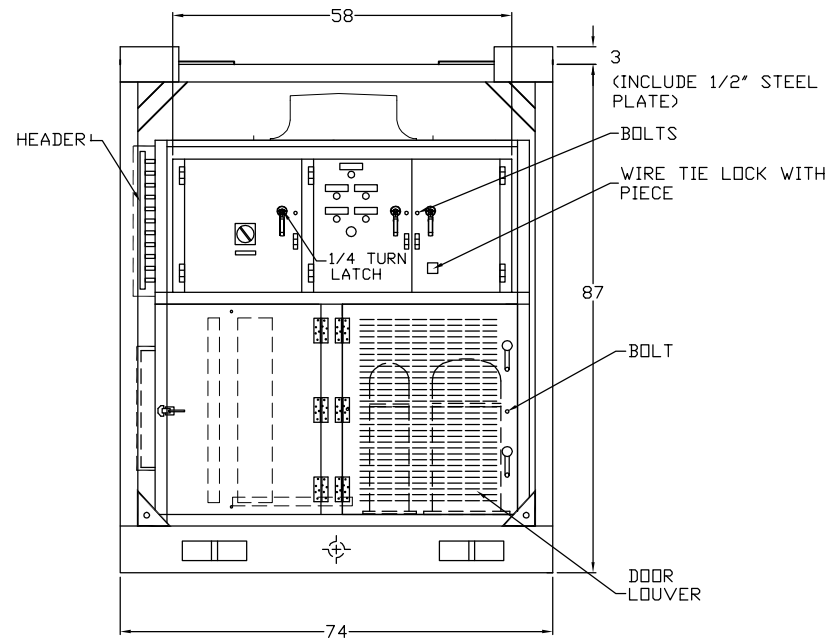
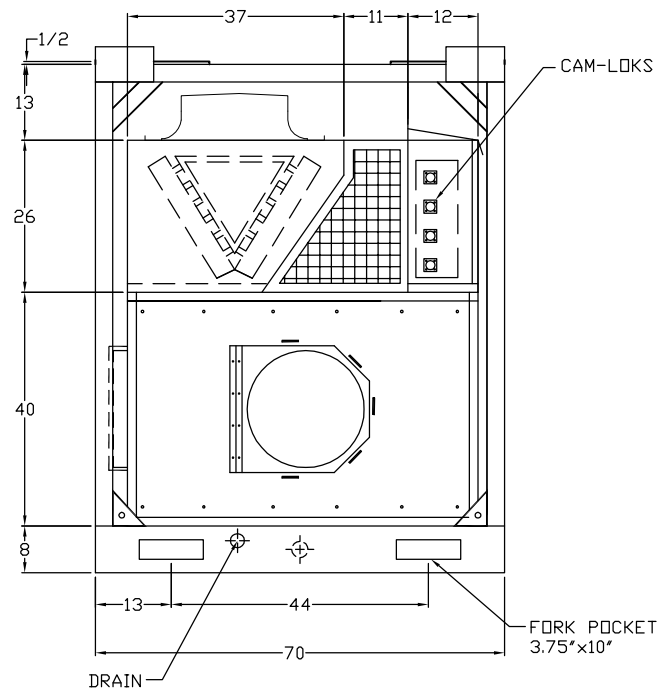


PLAN VIEW OF EVAP. BLOWER SECTION ONLY



CERTIFIED DRAWING

COMPRESSOR : **CPR27101**
 COND. COIL : **Contact Factory**
 EVAP. COIL : **Contact Factory**
 COND.FAN : **BLW27018 (Assembly)**
 MOTOR : 2.0 HP
 BLOWER : **BLW27037**
 POWER SUPPLY: 460/3/60Hz

NOTE :
 1. ALL DIMENSION TOLERANCE $\pm 1/2"$
 ALL DIMENSIONS ARE IN INCHES UNLESS OTHERWISE SPECIFIED.

DRAWN BY		ANG	DATE		15/05/2015
APPROVED BY		SP	DATE		15/05/2015
02.	REVISED STACK PLATE HEIGHT UPDATE DRAWING			25.05.15	ANG
01.				20.05.15	ANG
REV	DESCRIPTION			DATE	REV BY
					APP BY



**SMART FAMILY OF
COOLING PRODUCTS**

PROJECT 12 TON DX RENTAL ACS
 F/O :

MODEL SACP 12A-HS

TITLE
 AIR COOLED PACKAGED

DRAWING NO S110840164

A4 SCALE : N.T.S SHEET OF
 SMT/MFG/ENG/FM/05